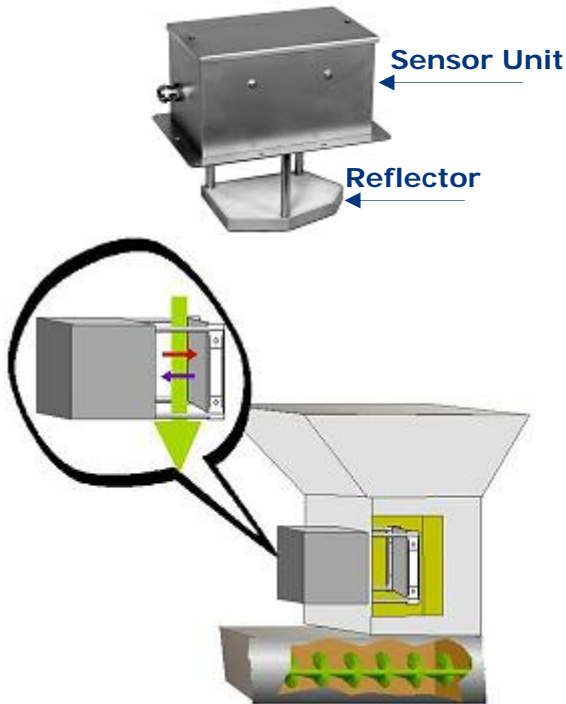


Moisture Measurement Solutions

intelscan - iScan Silo -

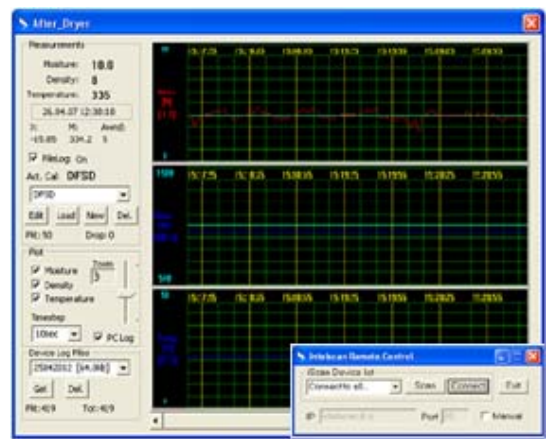


The iScan Silo is for products flowing inside a holding bin, buffer or silo. The sensor is simply mounted on the side of the silo wall, allowing products to flow between the sensor and reflector area.

Moisture (%), density (g/l) and temperature (°C or F) of the material being measured are immediately displayed. The system can store measurements on a flash-card memory chip that can be easily removed from it and connected to a PC computer for further analysis or data collection. Remote control of settings and data storage are done via Ethernet.



Main display of the iScan



Ethernet remote control and data storage

Specifications

Accuracy	± 0.5% (or better) compared to standard dry oven reference
Density accuracy	± 15 g/l
Measuring range	0 – 90% moisture content
Measuring update	1 – 30 seconds (adjustable)
Calibration settings stored	Unlimited
Network	Ethernet connectivity
Measurement output	Industry standard 4-20mA and 0-5V outputs for moisture temperature or density
Digital IO	Multiple in- and outputs
Data Storage	Locally with a Removable Flash Disk, anywhere remotely with a network connection
Tested to safety standard	IEC 61010-1
Dimensions	
<i>Sensor</i>	145 x 105 x 75 mm
<i>Display unit</i>	240 x 240 x 150 mm
Material	Stainless steel
IP protection	Sensor – IP65 / Display unit – IP64
Power consumption	
<i>Sensor unit</i>	<7 W
<i>Display unit</i>	<12 W
Electrical	
<i>Power</i>	110-240V, single phase 2A supply
Frequency	
<i>Microwave output power</i>	<200 mW
<i>Microwave field strength</i>	At 8GHz: <0.056V/m

Artec Testnology

Salie 15, NL-5331 DJ, KERKDRIEL
Postbus 12, NL-5330 AA, KERKDRIEL
Tel. + 31 (0)418 637590
Fax + 31 (0)418 637599

E-mail info@artec.nl
Web www.artec.nl
KVK 20089339
BTW NL226577338B01
