

The new patented TRACEiT® is a portable system for contact-free and first-rate quality, measurements of surface profiles and analyses.

TRACEiT® is the first instrument in the market, which documents, analyses and evaluates the visual impression, the appearance and the perceived quality of the product surface in a reproducible way.

The TRACEiT® measures 3-D topographies, roughness values,  $R_{a\ opt}$ ,  $R_{q\ opt}$  and  $R_{z\ opt}$  and it documents the visual impression similar to what is seen by the human eye.

The compact measuring head is controlled and powered by a notebook, which is part of the system. The TRACEiT® is therefore pre-eminently suitable for use on outside locations, but also for static measurements in a multiplicity of situations and applications.



## Advantages

- ⊕ Portable
- ⊕ Quick, easy-to-use and highly accurate
- ⊕ Reproducible results and on site calibratable
- ⊕ Topography and visual impression
- ⊕ Documentation, analyses and values
- ⊕ Wear and damage analyses



The measuring system is composed of a measuring head, connected to a special modified, portable notebook. All system functions are completed by the interaction between the measuring head and the notebook. Storage, calculations and analysis are done in the TRACEiT®-notebook.

The gained data can be exported for further analysis or other applications into another programme. The system is fully stand-alone and, because it does not require an external power source, it can be used for virtually any application.

## Application examples

- ⊕ Automotive, Aerospace, Shipbuilding Industries (leather, textiles, coatings, plastics,.....)
- ⊕ Paper industry (Printing, drawing, safety, paper, tissues...)
- ⊕ Medicine (melanoma, scar formation,.....)
- ⊕ Cosmetics (skin structure, homogeneity,.....)
- ⊕ Arts (paintings, statues, wood, plastics,.....)
- ⊕ Buildings (Walls, stone, concrete, wood, floor and wall coverings,.....)

The system generates calibratable and therefore reproducible optical, visual impressions as well as an accurate topographical surface evaluation. From the optic-visual impressions and topography data, characteristics are built.

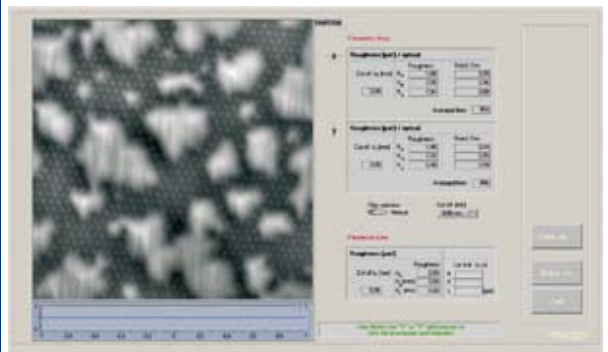
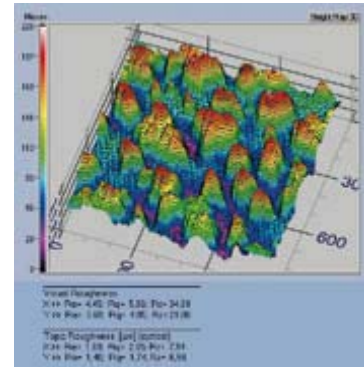
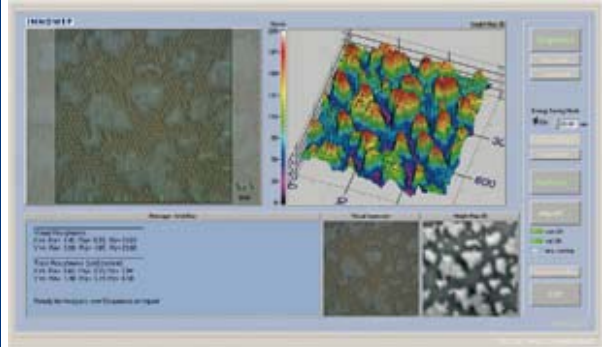
## Specifications TRACEit® system

### Measuring head

Measuring area	5 x 5 mm
Resolution z-axis	2.5 µm
Resolution x/y-axis	2.5 µm
Datapoints x/y-axis	1500
export files	.txt .bmp

### Notebook

HDD	120GB
RAM	1GB
Processor	Intel Core 2 Duo, 2GHz, 4MB
Display	12.1", 1280 x 800 WXGA
power supply	100 - 240V, 65W
System weight	5.0 kg



## Artec Testnology

Salie 15, NL-5331 DJ, KERKDRIEL  
P.O. box 12, NL-5330 AA, KERKDRIEL  
Tel. + 31 (0)418 637590  
Fax + 31 (0)418 637599

E-mail [info@artec.nl](mailto:info@artec.nl)  
Web [www.artec.nl](http://www.artec.nl)  
Comm. Reg. No. 20089339  
VAT NL226577338B01