

Elastocon

Draught Hood EB 02.10



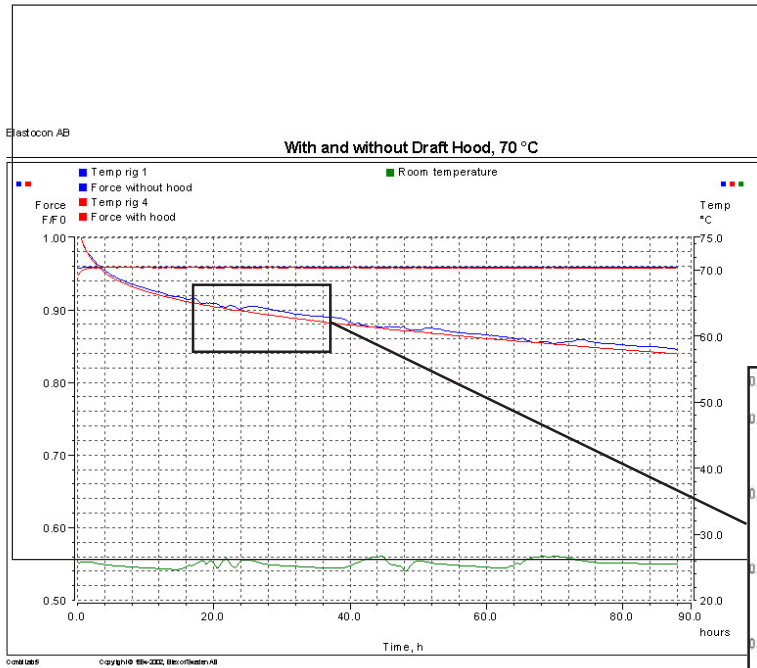
Draught Hood, to eliminate variations in force measurement due to temperature and air effects.

This hood is made of Plexiglass and has a temperature controlled system with a Peltier cooling element, capable of keeping the temperature within $\pm 0,2$ °C. The hood fits both EB 01 and EB 07. A special version is available for EB 02.09.

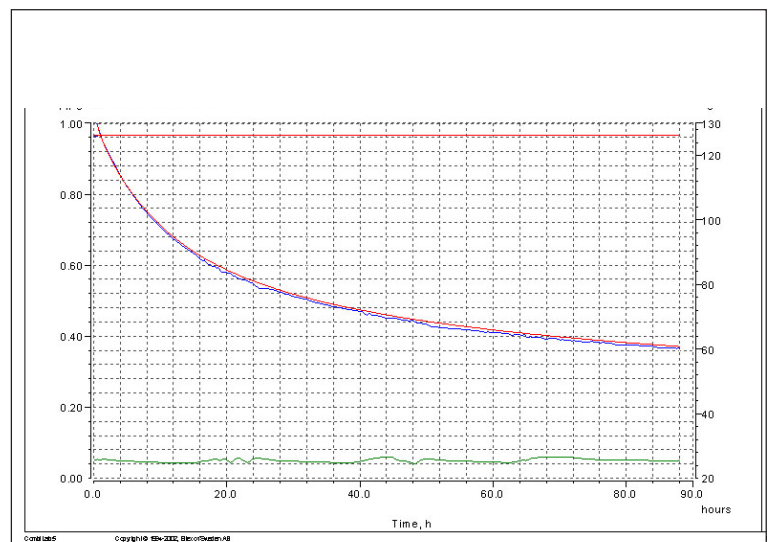
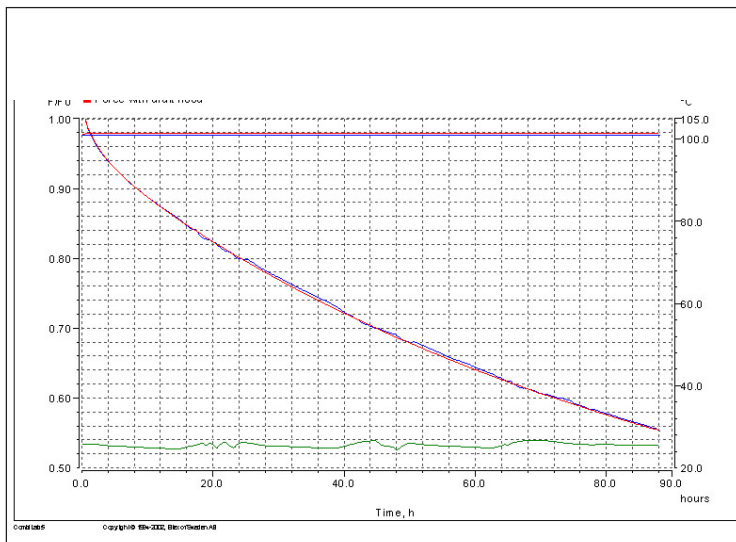
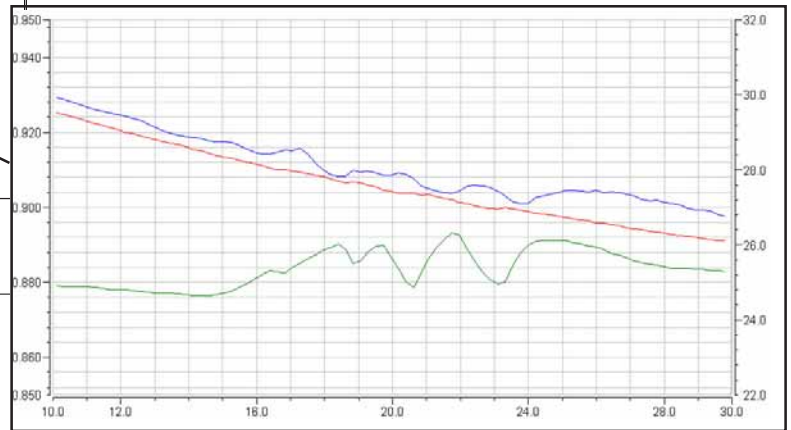


Technical Specification, Draught Hood EB 02.10

Cooling power, W	50
Power supply	
Voltage in, V	110-240 VAC 50/60
Voltage out, V	= 24
Current out, A	3 - 3,5
Weight: kg	8
Dimensions: w x d x h, mm	660 x 425 x 350



The graphs shows a test run with and without the temperature hood. The blue curves are the rigs without a hood and for the red curves a hood is used. The green curve is the room temperature.



ARTEC TESTNOLOGY
P.O. Box 12 - NL-5330 AA KERKDRIEL
Salie 15 - NL-5331 DJ KERKDRIEL
Tel: +31(0)418 637590 - Fax: +31(0)418 637599
E-mail: info@artec.nl - Web: http://www.artec.nl